

Technical Data Sheet



BECOSTOP ASF-VG

BECOSTOP ASF-VG is a shuttering unit braced with lattice girders with integrated fixing clips designed for the installation of construction joints in base slabs which also require metal waterstops. In combination with a suitable metal waterstop, it can also be used for waterproof concrete constructions. Integrated intake for metal waterstops make the installation of metal waterstops quick and easy.

Advantages

- braced with lattice girdes
- free choice of metal waterstop
- easy installation
- key-profiled formwork surface
(key-profiled acc. to EC2)

Product combinations

Spacer with leak protection

BECOSPACE

Leak protection

BECOSTRIP

Technical specifications

Specification: ready-to-use shuttering unit for metal waterstops provided on site B= 170 mm (standard), (other metal waterstop widths on request)

Materials: finely meshed expanded metal, lattice girdes, smooth round steel

Dimensions: unit length L = 2250 mm
installation height H = >300 mm

Occupational Safety

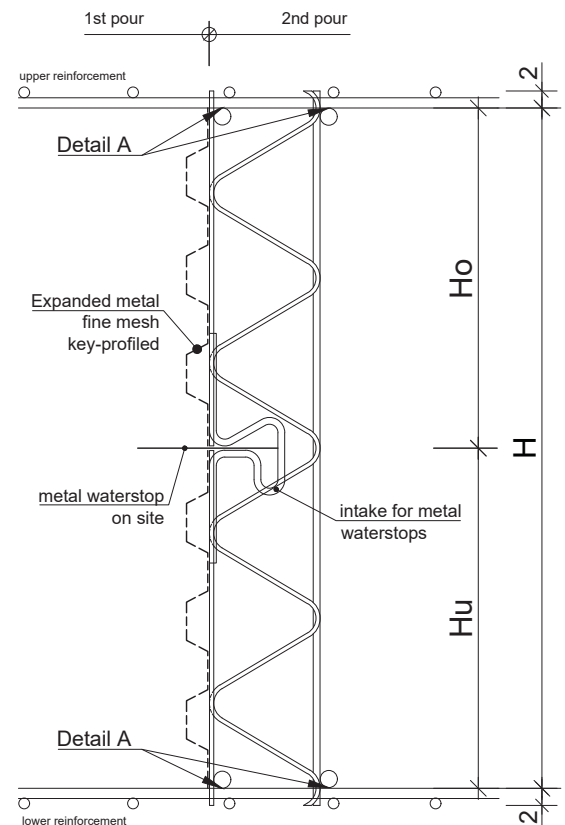
Wear safety gloves during the installation.

Assembly instruction

Place the BECOSTOP ASF-VG shuttering unit on top of the bottom reinforcement layer and fix rigidly with tie wire or by welding to prevent it from toppling over. Metal waterstops are slid all the way into the slot to the stop of the intake for metal waterstops. Install the top reinforcement layer and fix the shuttering unit rigidly to the reinforcement. Depending on the concrete pressure, additional on-site support might be required.



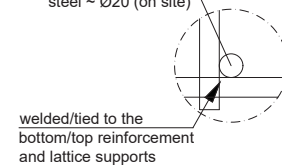
BEWUSST. BESSER. BAUEN



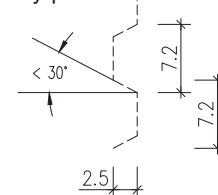
mounting example

Detail "A"

concrete reinforcement
steel ~ Ø20 (on site)



detail key-profile



These statements are based on extensive tests and practical experience. They cannot be transferred to every application. We therefore recommend carrying out application tests if necessary. We reserve the right to make technical changes as part of further development. Furthermore, our terms and conditions apply.